

Fleet 3 exterior camera housing assembly guide

For installation of this housing, refer to the Fleet 3 Exterior Camera Housing Installation Guide on the Fleet 3 [product page](#).

Parts list

Part Number	Part Name
T01070	Fleet 3 Internal Camera
EW02124	Ethernet Cable, 15 ft.
MPJ1154	Fleet 3 Pigtail Support Bracket, Top
MPJ1155	Fleet 3 Pigtail Support Bracket, Bottom
MTS0025	Shrink Tube, 1" ID x 85 mm LG
T01137	Exterior Camera Housing
EW02140	12V Power Cable Assembly, Ext Cam Housing, 15 ft, Fleet
MRD0041	Insert, 2-hole, Cable Gland, M25

Tools and supplies

- Safety glasses
- 7/64" hex screwdriver
- 5/64" hex screwdriver
- 5/16" socket wrench
- Scissors
- 3 mm flathead screwdriver
- 33 mm wrench or adjustable pliers
- Spudger stick

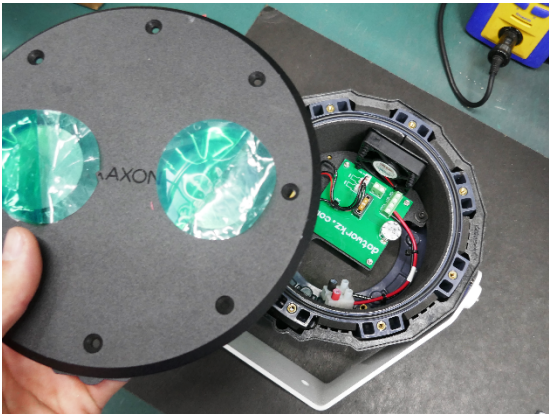
Assembly

Open the housing

1. Unscrew the rear cover using a 7/64" hex screwdriver and remove it.

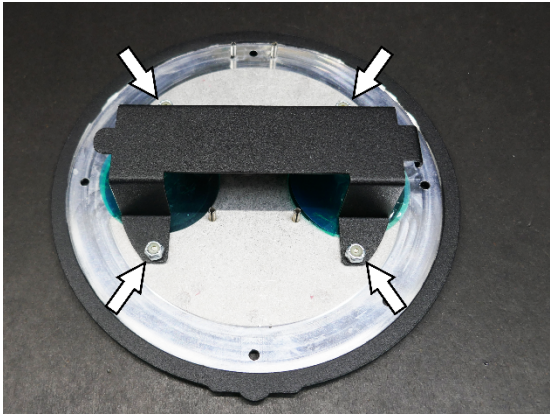


2. Turn the housing over, unscrew the front cover using a 5/64" hex screwdriver, and remove it.

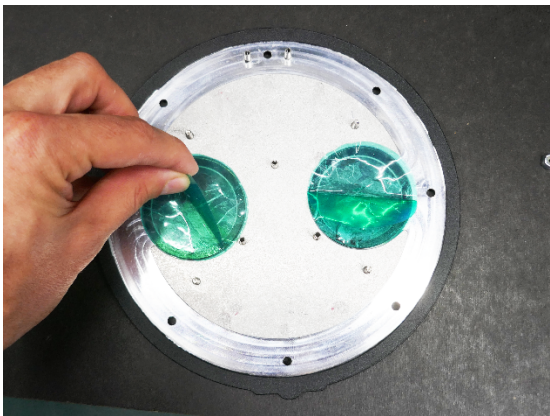


Install the camera

1. Unscrew the nuts for the bracket from the front cover.



2. Remove the protective film from the glass on the inside of the base. Do not remove the protective film on the outside yet.



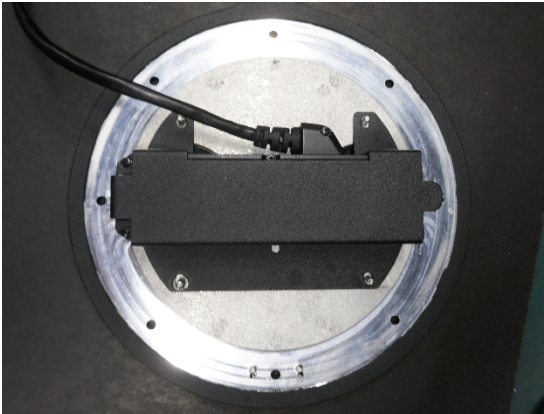
3. Remove the protective film from the camera lens.



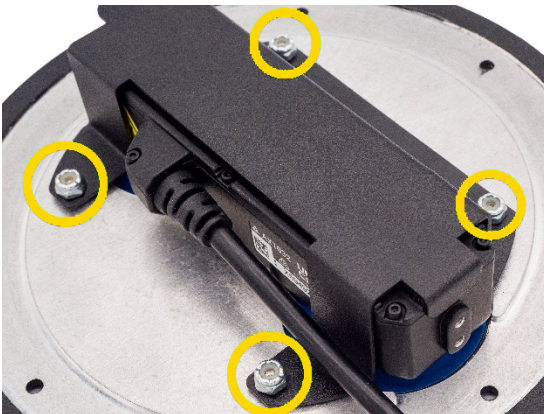
4. Place the camera into the bracket with the lens facing out.



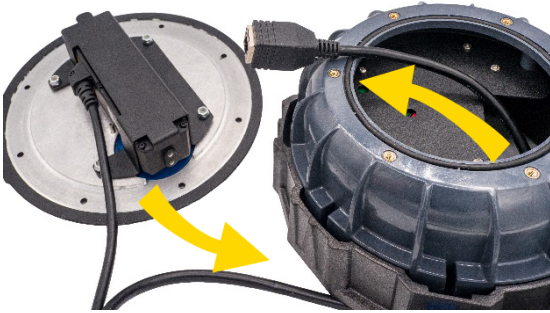
5. Place the bracket on the screws, aligning the slot in the bracket with the pin on the cover.



6. Attach the bracket using the 5/16" silver nuts and torque to 2.5 ± 0.1 Nm.



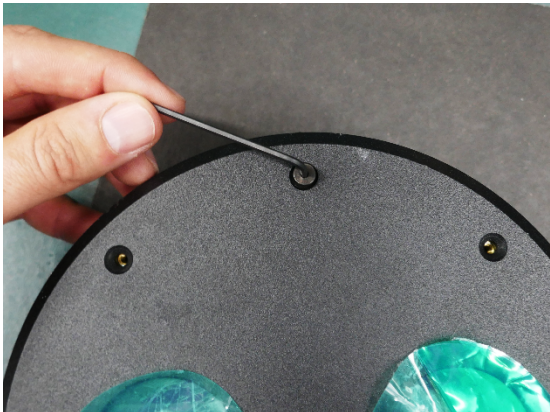
7. Pull the camera's cable through the housing so it comes out on the back.



8. Place the cover back on the housing, ensuring it's in the correct position.

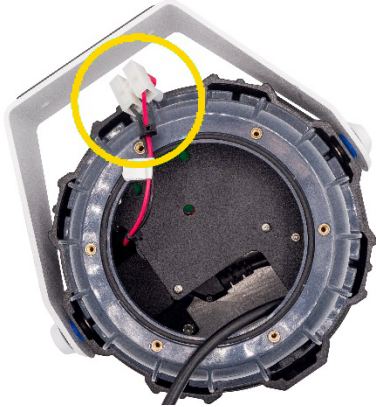


9. Secure the cover to the housing with the black 5/64" hex screws and torque to 1.4 ± 0.1 Nm.

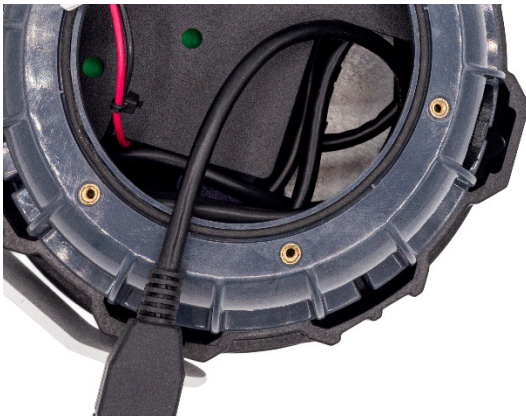


Install the ethernet cable

1. Set the power terminal to the side so you have full access to the inside of the fixture.



2. Coil the camera's cable into the front half of the housing, leaving the camera plug out.



3. Find the end of the ethernet cable with only one tag and remove the tag.



4. Thread the cable through the top of the sealing nut.



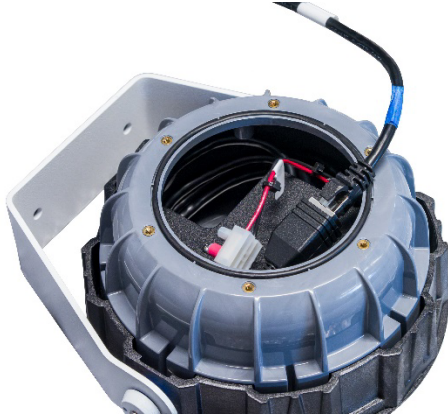
5. Thread the cable through the cable gland on the rear cover, using a spudger to push in the cord tab so it fits through.



6. Slide the shrink tube onto the cable.

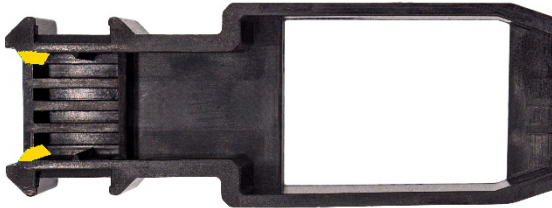


7. Plug the cable into the camera's port.

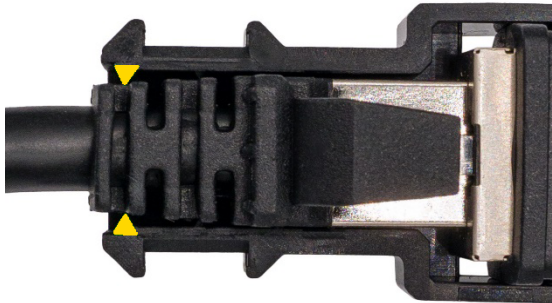


Attach the pigtail bracket

1. Find the alignment triangles (highlighted below) on the bottom bracket.



2. Align the alignment triangles on the bracket with the first rib of the ethernet cable.



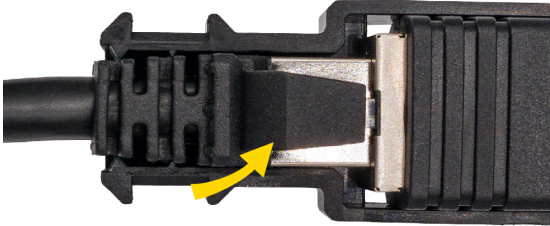
3. Push the bottom bracket around the cords on the side without the button for the cable.



4. Place the wider side of the top bracket over the cable side first.



5. Ensure the cutout goes around the edge of the ethernet cable's button, not over it.



6. Place the narrow side of the top bracket over the ethernet port and press the halves together.



7. Ensure the four clips from the top bracket are secured to the bottom bracket.

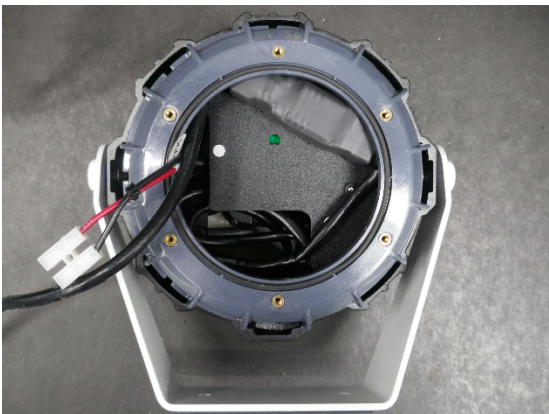


Apply heat shrink tube

1. Slide the shrink tube over the bracket and use a heat gun to shrink it until the tube conforms to the shape of the bracket.

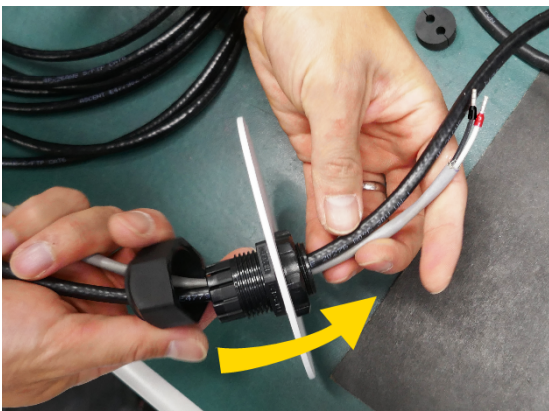


2. Tuck the bracket underneath the edge of the housing.

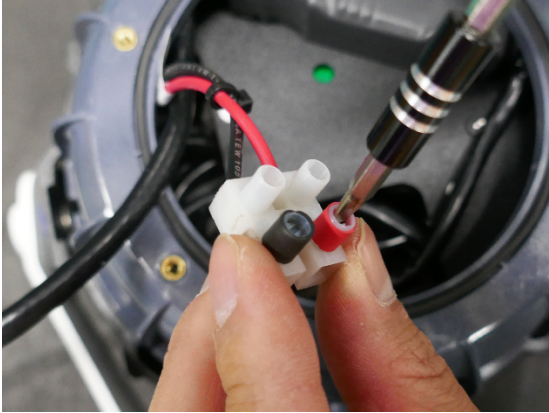


Install the power cable

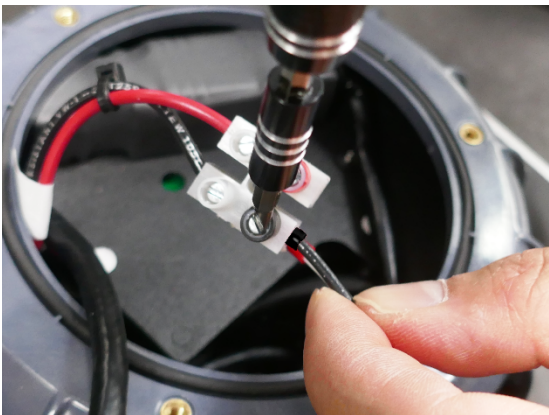
1. Thread the power cable through the sealing nut, then through the cable gland.



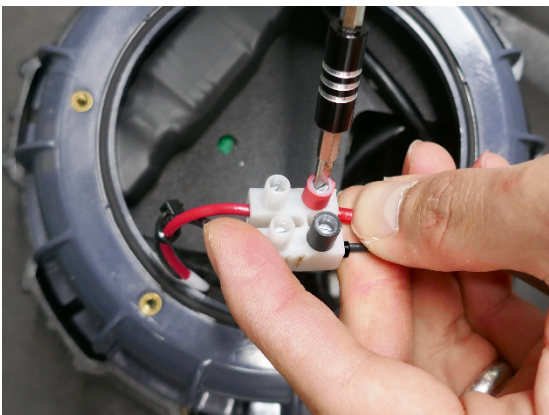
2. Use a 3 mm flathead screwdriver to loosen the screws on the power terminal.



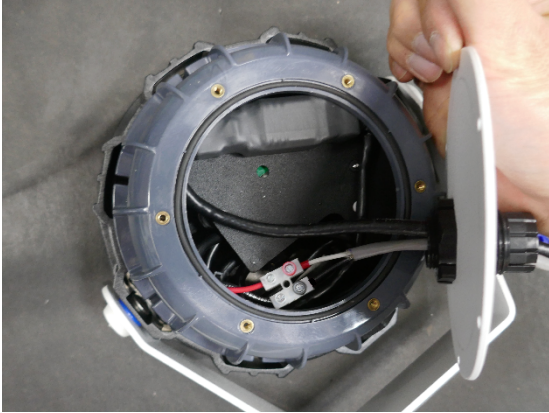
3. Place the black wire in the black side of the power terminal and tighten.



4. Place the white wire in the red side of the power terminal and tighten.



5. Set the power terminal inside the unit, on top of the metal plate.



Close the housing

1. Place the rear cover on the housing.



2. Secure the cover with the silver 7/64" hex screws and torque to 1.4 ± 0.1 Nm.



Install rubber insert

1. Hold the rubber insert close to the cable gland. Place the ethernet cable on one side of the rubber insert and the power cable on the other.



2. Work the rubber insert fully into the cable gland until it is sitting below the teeth.

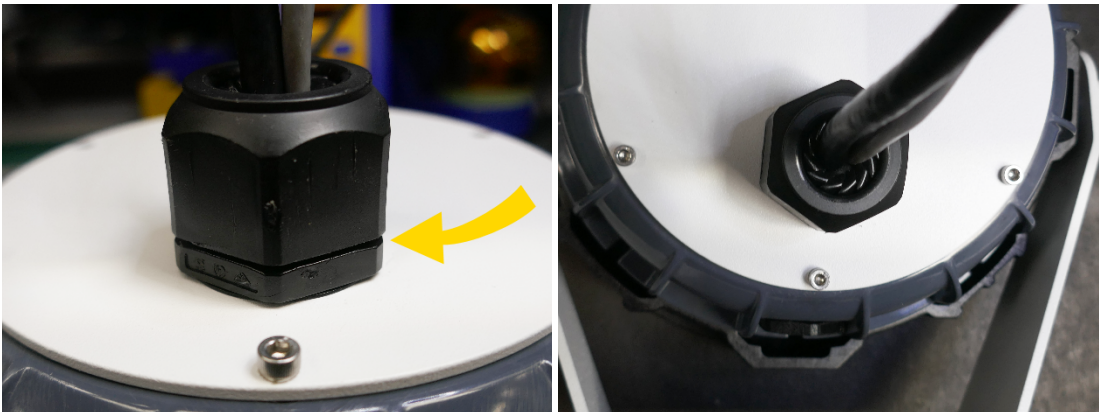


Install cable nut

1. Install and tighten the sealing nut onto the cable gland with a 33 mm wrench or adjustable pliers. See next step for tightening guidelines.



2. Tighten sealing nut on the cable gland until there is no gap between them, then back off as needed to align the six sides of the nut and gland base.



End of article

For kit rev B
MMU0085